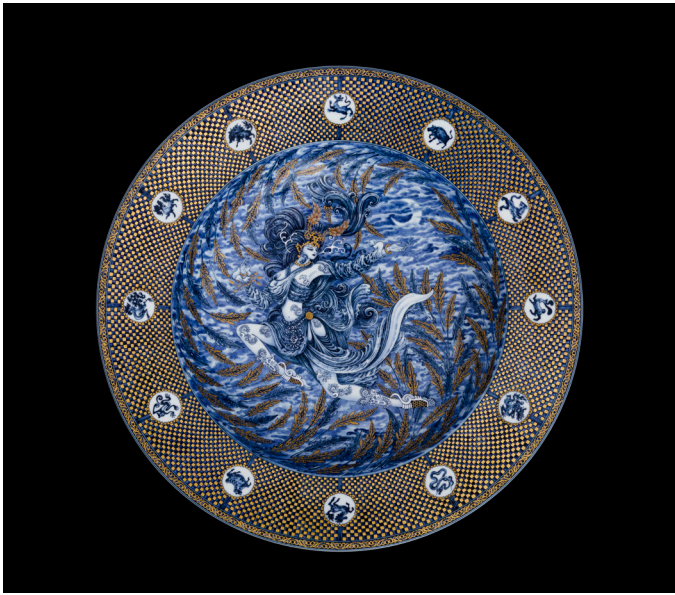


FOR IMMEDIATE RELEASE

April 30 - May 28th, 2021

Garden of Dreams
Porcelain Stories by Yuki Hayama



New York, NY - Ippodo Gallery is pleased to announce the opening of *The Garden of Dreams: Porcelain Stories* by Yuki Hayama, the artist's second solo exhibition at the gallery. This show of over 20 works that blend the distinction between painting and ceramics will be on display from April 30 to May 28 2021, by appointment only.

Yuki Hayama (b. 1961) grew up and works in Arita*, Saga Prefecture, the birthplace of Japanese porcelain and one of the world's leading porcelain centers. At age 15, Hayama left school to pursue the porcelain tradition, apprenticing with a local workshop before opening his own atelier at 24.

Each of Hayama's porcelain works is a multistage, multimedia project, including art historical research, a background narrative, and the physical creation of the object. Hayama begins by selecting and researching the specific style that will become the basis for each piece.

Since its earliest iterations, Japanese porcelain artists have drawn inspiration from ceramics traditions around the world, most notably from China, but also from Europe and the Middle East. This interlinking heritage is evident in *The Garden of Dreams*, which explores ceramics and design traditions from around the world and across time periods.

After selecting a style, Hayama composes a narrative story that becomes the final catalyst and inspiration for the physical object. Once the project's literary stage is complete, Hayama creates the porcelain object, typically on a potter's wheel. After an initial bisque firing in the kiln, Hayama begins the painstaking process of *etsuke*, or painting ceramics*. Without any underdrawings, Hayama outlines his painting relying on 128 memorized flower patterns. At this stage, the porcelain's surface is still porous, and each stroke leaves an indelible, irreversible mark. Using five traditional hand-ground glazes made from natural materials, Hayama meticulously layers the resulting pigments to create as many as 72 colors, refiring his works up to 12 times to achieve the desired hues.

A beautiful example of Hayama's meticulous process is through the centerpiece of this exhibition, *Goddess of The Blue Moon*. This piece depicts an elegant queen with wave-like garments and ethereal features holding "eternal life" and running to the moon. A movement of gilded leaves delicately dance around as she seems to gently prance across the surface of the plate. Surrounding the figure are the 12 zodiacs, the symmetry of the design is exquisite, delicate and a result of dedicated practice.

The *Garden of Dreams* explores ideas of creation, recreation, and rebirth. Hayama has written: "Even when broken, fragments of ceramics remain, never to be totally destroyed but serving as a bridge between the past and the people of the future."

**Since the early 17th century Arita-based artisans pioneered the development of wares vibrantly decorated with polychrome enamel, a ceramics lineage that continues in Hayama's practice.*

**In the tradition of Arita wares, Hayama favors simple, functional forms that allow the viewer to focus on the painted decoration.*

Profile



Having carried out an exhaustive study of decorative patterns from around the world, he imbues each porcelain pot with a story. Introducing characters from ancient legends and myths, he questions the meaning of every type of pattern, causing the viewers to reconsider space and life, and inviting them back to the distant past when people lived in harmony with nature. The message he transmits through his works is one of gratitude for the past and hope for the future.

-
- 1975 Began working at a pottery in Arita City and studying the manufacture of porcelain, including etsuke (painting)
 - 1985 When he was 23 years old, he set up his own kiln in Yamauchi-cho in Saga Prefecture
 - 1990 Held his first solo exhibition at ANA Hotel in Hakata, Fukuoka Prefecture. Ever since his exhibitions have been held at various places in Japan.
 - 2007 May Exhibition at Spiral Garden in Omotesando, Tokyo “ YUKI HAYAMA: A Pattern Odyssey” (This exhibition traveled to the Design Museum in Helsinki, Finland from October 2007 until January)
 - 2008 The title was changed to “Ceramic Story YUKI HAYAMA Exhibition” by the curators of the museum, reflecting his attitude toward the creation process.)
 - 2007 June Invited to the Art Department of ARABIA (iittala company), located in the suburb of Helsinki, as a special guest designer for half a year and produced work of art. (The piece is collected and exhibited in the Arabian Museum and the Design Museum now.)
 - 2012 Exhibition “Art Crafting Towards the Future” at the 21st Century Museum of Contemporary Art in Kanazawa, Ichikawa Prefecture
 - 2015 Exhibition “Japanese Kōgei | Future Forward” at the Museum of Arts and Design, New York
 - 2016 Exhibition at Ippodo Gallery New York “Beauty of Life 生命の美 - In collaboration with Joseph

Published Works:

“The World Miniature Painting : Flowers of One Thousand Years, the Yuki Hayama Collection“ (2002, self-published)

“The Melody of Poetic Imagination: the Yuki Hayama Collection” (2005, Shin Nippon Kyoiku Tosho).

“A Girl Who Turned Into A Fish” (picture-book) (2008)

Works



月の女神月輪盤
Goddess of the Blue Moon
3 x 16 1/8 in
7.6 x 41 cm



万花彩祭器
Offering Bowl with Ten Thousand Flowers
4 5/8 x 24 3/4 in
11.6 x 63 cm



森羅万象図壺
Vase: Shinrabansho All of Creation
10 7/8 x 13 5/8 in
27.5 x 34.5 cm



煌輝唐華文壺
Vase: Ten Thousand Flowers
13 1/8 x 15 1/4 in
33.3 x 38.7 cm



木漏れ日陶板
Porcelain Tiles: Sunlight Shining Through Trees
額寸 17 1/8 x 48 5/8 in
43.6 x 123.6 cm



万花彩香水瓶〈小〉
Perfume Bottle: Ten Thousand Flowers III (Small)

4 1/4 x 3 in
10.7 x 7.5 cm

万花彩香水瓶〈中〉
Perfume Bottle: Ten Thousand Flowers II
(Medium) 4 5/8 x 3 1/4 in

11.8 x 8.4 cm

万花彩香水瓶〈大〉
Perfume Bottle: Ten Thousand Flowers I (Large)

5 3/8 x 3 3/4 in
13.8 x 9.5 cm



金彩美瑠菊花文香水瓶
Perfume Bottle: Chrysanthemum and Miru Aquatic
plants with Gold glaze

H4 3/8 x W4 3/8 in,
H11.2 x W11.2 cm



魚藻文壺
Vase: Fish and Aquatic Plants

14 3/4 x 15 3/8 in
37.3 x 39.1 cm



金彩綠鳳凰香水瓶
Perfume Bottle: Green Phoenix
and Arabesque with Gold glaze

H4 5/8 x W3 1/2 in
H11.6 x W8.8 cm



海青皇賜香水瓶
Perfume Bottle: Imperial Gift of an
Iznik Blue

6 1/2 x 3 3/8 in
16.6 x 8.6 cm



森羅万象図香水瓶
 Perfume Bottle: Shinrabansyo All of Creation
 4 5/8 x 4 3/8 in
 11.8 x 11.2 cm



海青皇賜I
 Memorial Box: Imperial Gift of an Iznik Blue I
 H2 1/8 x W4 1/4 x D2 1/4 in
 H5.2 x W10.7 x D5.7 cm



海青皇賜II
 Memorial Box: Imperial Gift of an Iznik Blue II
 2 1/8 x 3 5/8 in
 5.3 x 9.2 cm



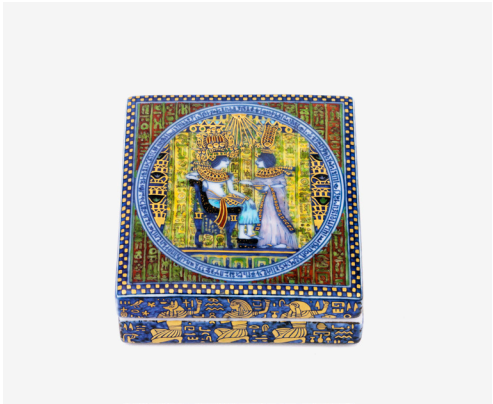
静謐の調べI
 Memorial Box: Melody of Tranquility I
 2 1/8 x 3 5/8 in
 5.2 x 9.1 cm



静謐の調べII
 Memorial Box: Study on Tranquility II
 H1 3/4 x W5 1/2 x D2 in
 H4.6 x W13.9 x D5 cm



万花彩
 Memorial Box: Ten Thousand Flowers
 H2 1/8 x W4 1/8 x D2 1/4 in
 H5.1 x W10.5 x D5.7 cm



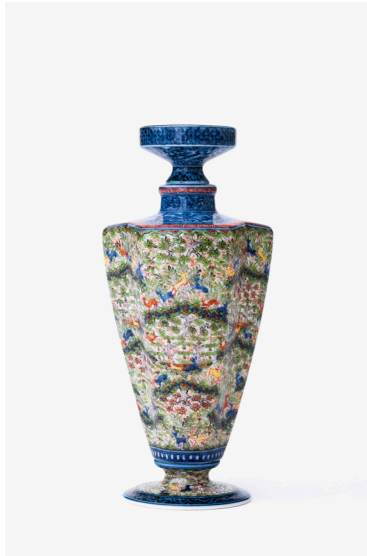
ナイルの賜物I
Memorial Box: A Gift of the Nile I
H1 1/8 x W3 1/4 in,
H2.9 x W8.3 cm



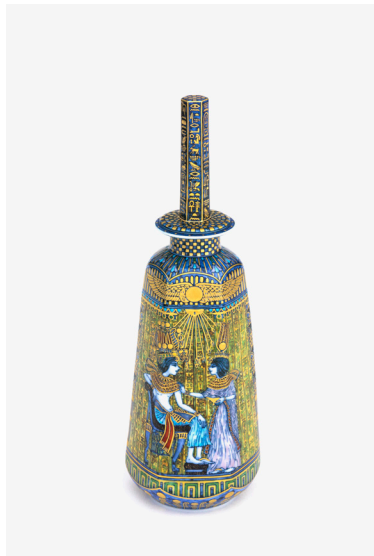
ナイルの賜物II
Memorial Box: A Gift of the Nile II
H1 1/8 x W3 1/4 in
2.9 x 8.4 cm



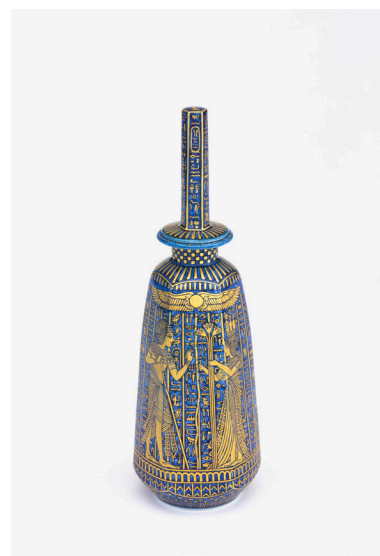
森羅万象図
Memorial Box: Shinrabansyo All
Creations
H2 1/2 x W2 1/2 in
H6.3 x W6.4 cm



鹿鳴図香水瓶
Perfume Bottle: Rokumei (Deer's
Cry)
5 1/4 x 2 1/2 in
13.4 x 6.2 cm



ナイルII香水瓶 Perfume Bottle:
A Gift of the Nile I
H7 5/8 x W2 1/2 in
H19.4 x W6.5 cm



ナイルII香水瓶 Perfume
Bottle: A Gift of the Nile II
H7 3/4 x W2 5/8 in
H19.5 x W6.7 cm

ippodo gallery

TOKYO - NEW YORK

ABOUT IPPODO GALLERY

Ippodo Gallery has remained devoted to the important of nature's majesty since its inception in 1996, marrying the worlds of Japanese reverence with the New York lifeblood of impactful and high-quality works. The New York gallery space opened in 2008 and continues to bring distinct and meaningful Japanese art to a Western audience on the Upper East Side.

For more information and images, please contact:

Shoko Aono
New York Gallery Director
212.947.4899
shoko@ippodogallery.com

Milly Cai
New York Associate Gallery Director
milly@ippodogallery.com